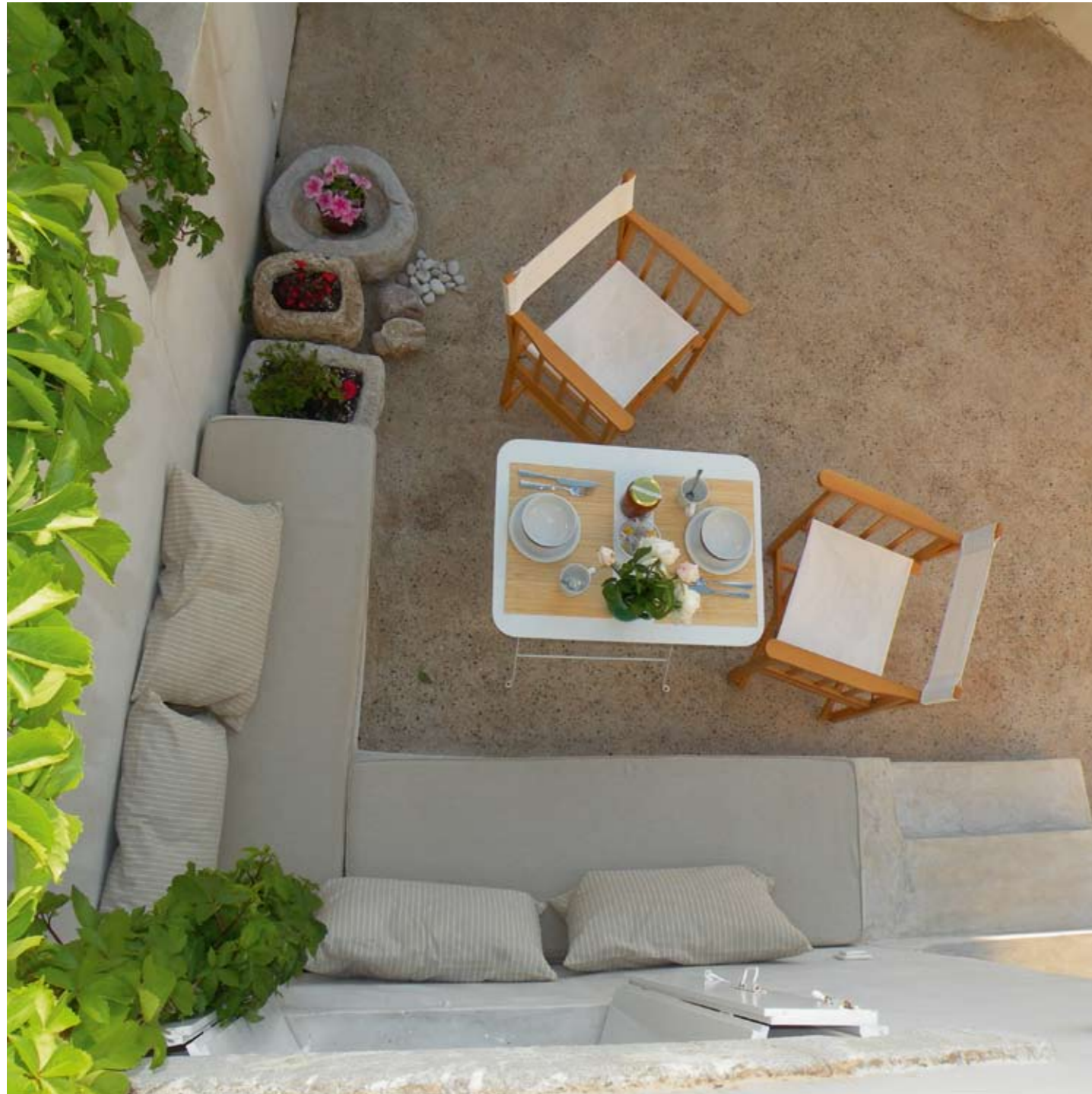




Π Ο Ρ Τ Α Ρ Ι
PORTARI HOUSES

ARONIADIKΑ, KITHIRA, GREECE



Welcome home!

The Portari Houses offer a different vacation philosophy:
warm hospitality in picturesque country houses
that provide the quality services of a hotel,
while at the same time warm, personal attention is ensured by the hosts.
The residences stand out for their unique design and their location
in the Medieval settlement of Aroniadika -
an ideal setting for a relaxed and private vacation.



The exterior



The land where the Portari Houses are found extends over half an acre, complete with a barbeque pit, flowers, herbs and a vegetable garden.

The complex is made up of three separate dwellings: **Portari House I**, a two storey residence (110 sq.m.), **Portari House II** (80 sq.m.) and **Portari House III** (60 sq.m.) single level. **The Cottage** (60 sq.m.), a restored traditional home (home of the owner) is also for rent.



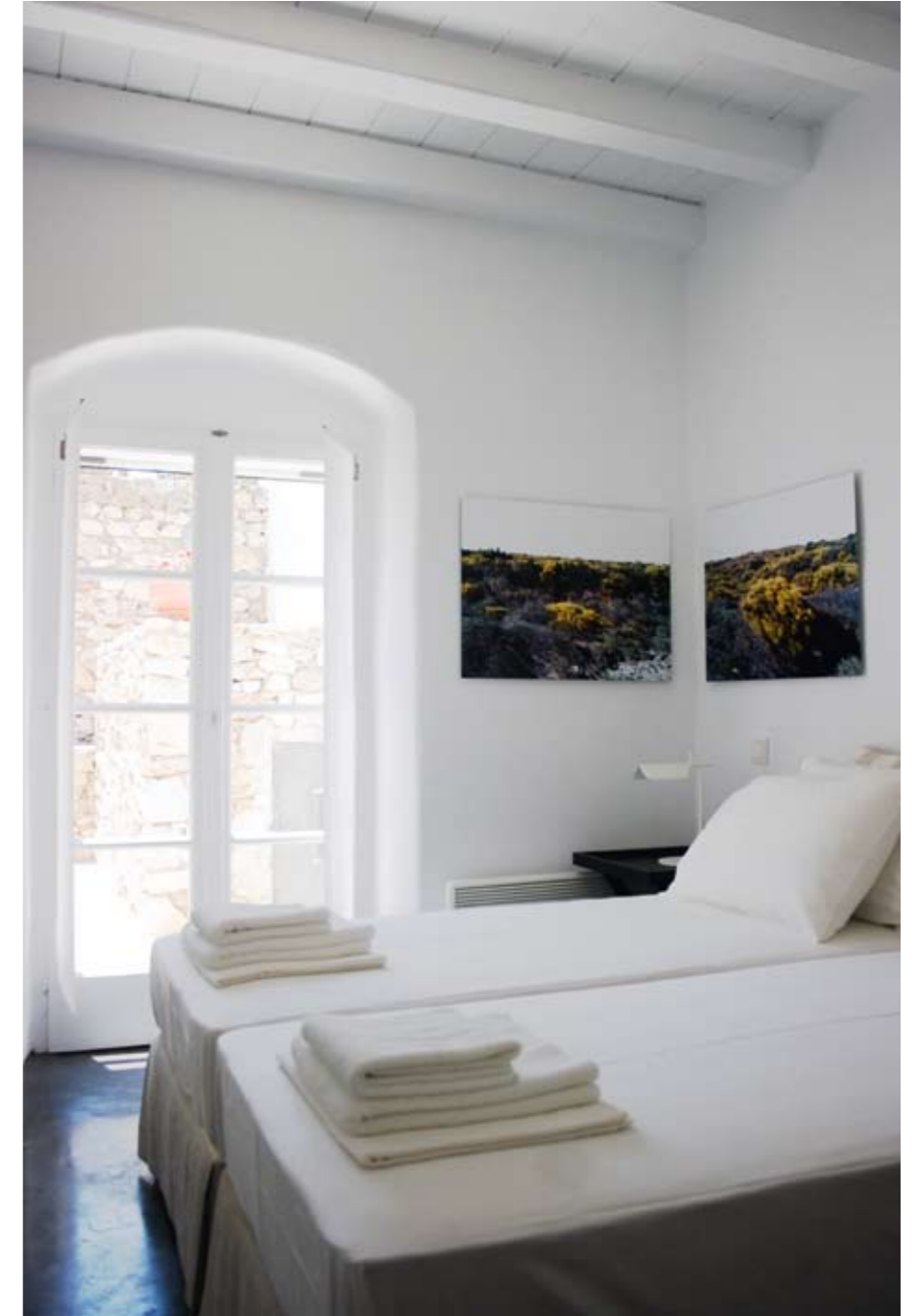
The interior



The Portari Houses combine traditional architecture with eco-friendly bioclimatic functionality (thick stone walls, arches, dry stone walls, stone pathways), with modern, minimalist interior design and furniture from well known design houses such as Vitra, B&B Italia, Moooi etc.



Quality amenities and services, such as daily housekeeping, soft linen, anatomic mattresses, Korres cosmetics, Nespresso coffee machines, LCD TVs, Nova - Cable TV, Internet services etc. are all part of the high quality service offered.



INFORMATION

Portari House I (110 sq.m., two storey house, 4-6 people)

Ground floor: Bedroom, bathroom, combined living room and kitchen space with a fireplace, two built-in single beds in the living room area, a large courtyard, partially shaded by a garden pergola with outdoor furniture.

First floor: Bedroom, a second bathroom, a large balcony with a rural view, deck furniture and an umbrella for shade.

Portari House II (80 sq.m. 2-4 people)

Bedroom, bathroom, combined living room and kitchen space with a fireplace, two built-in single beds in the living room area, two verandas (east and west) complete with garden furniture.

Portari House III (60 sq.m. 2-4 people)

Bedroom, bathroom, combined living room and kitchen space, two built-in single beds in the living room area, shaded veranda.

The Cottage (60 sq.m. 2-4 people)

Independent residence, located close to the main complex. Bedroom, bathroom, kitchen, living room with two built-in single beds, shaded veranda/courtyard with a built in couch and garden furniture. There is also an open roof deck above the ground floor.

In the yard

Barbeque and dining area.
Fruit and vegetable garden.

Facilities & Amenities

Functionality, comfort and style are ensured by the quality of the modern, brand name appliances and technology:

- Simmons Fascination mattresses
- Carteco linens and towels
- Korres natural bodywash and shampoos
- Fully equipped kitchen
- Refrigerator
- Electric stove and ceramic range oven
- Ceiling fans
- Coffee pot for filtered coffee
- Nespresso coffee machine
- Electric kettle
- Miele dish washer (House I)
- Washing machine (House I and the Cottage)
- Internet (Houses I, II, III)
- LCD TV
- CD player (House I and the Cottage)
- DVD player (Houses I, II, III)
- Nova (Cable TV)
- Music CDs
- Hair dryer
- Iron
- Ironing board
- Laundry rack
- Screened windows
- Radiators
- Fireplace (Houses I, II)
- Living room table 'fat fat table' by B&B Italia
- Light fixtures by Moooi
- White chairs by Vitra (House I)
(design: Charles Ray Eames, 1950)
- Kitchen tables 'table one bistrot' and 'string chairs' by Magis (House II, III)
- Flos bathroom and bedside lighting
- Black Jumbo Bean Bag (Houses II, III)
- Fermob outdoor dining tables

Services included in the price

- Welcome basket with traditional rusks, special honey from Kithira and bottled water
- Tea, ground filter coffee, instant coffee and espresso is offered daily (one serving per person)
- Daily housekeeping
- Change of sheets every 3 days
- Korres natural bodywash and shampoos
- Staff fluent in Greek, English and Italian
- Cell phone contact available 24 hrs/day

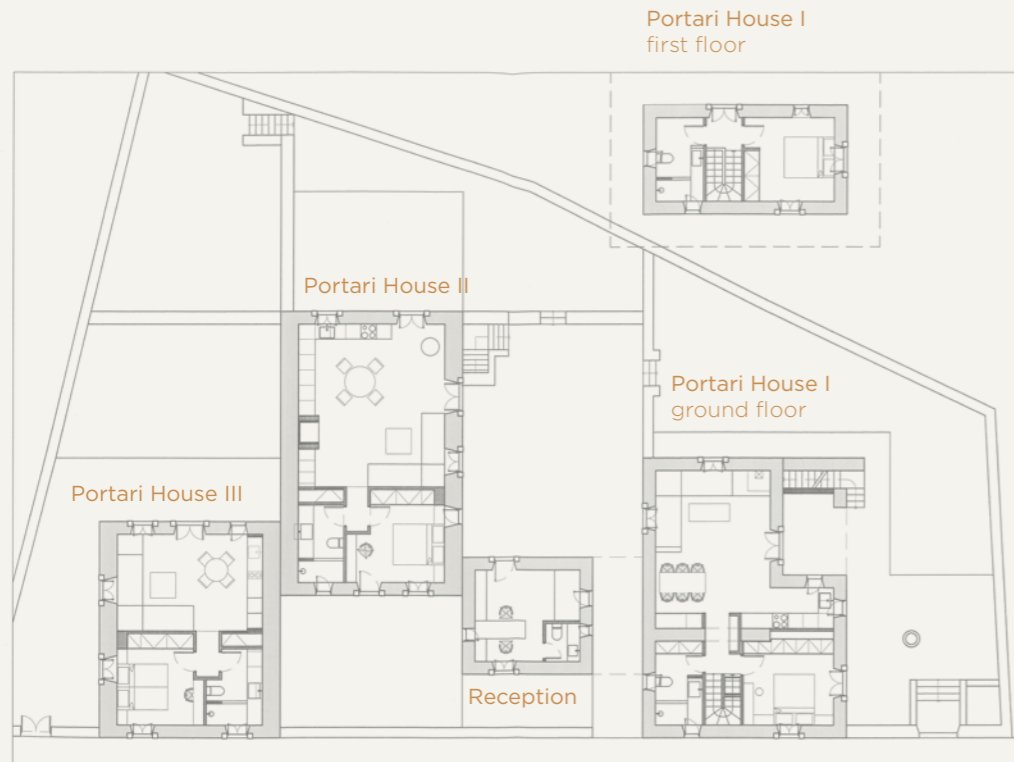
Services provided at an additional cost

- Car rental
- Super market and bakery shopping
- Kitchen cleaning service
(washing and putting away of dishes, cookware etc.)
- Party planning, supplies for barbeque in the garden, cooking - homemade food in your residence etc.

Location

The Portari Houses are found in the village of Aroniadika, a key location and main crossroads in the heart of the island. The village is an ideal base from which to start discovering all the beauties of Kithira. The village of Aroniadika is an officially protected, picturesque settlement of unique architectural characteristics. Over the last few years, many Greeks as well as foreigners have built their summer homes here, bringing new life to the village. Old ruins and restored buildings compose a charming setting that remains untouched by time.

The guesthouses are located 5 km from the airport, 15 km from the port of Diakofti, 15 km from the Chora (main village of the island), 4,5 km from the village Potamos (large village, commercial center) and 8,5 km from the closest beach.



Kithira



The island of Kithira (284 sq.km.) is located south of the Peloponnese, between three seas, the Ionian sea, the Cretan sea and the Aegean sea, and belong to the Ionian Islands complex. Kithira is 120 nautical miles from the port of Piraeus and belongs to the same prefecture. There are about 64 settlements and villages on the island and roughly 3500 permanent residents.

Access

By plane, daily from Athens during the summer, less frequent from Thessaloniki.
By boat from Neapoli, Gytheio, Kalamata, Kissamo in Chania Crete, Rethymno Crete and Piraeus.

For more information please visit www.kythera.gr/gettinghere/routes.php

Beaches

You can choose one of the eastern beaches (Palaiopoli, Kaladi, Fyri Ammos) or one of the beaches on the south or west (Melidoni, Diakofti, Halkos), depending on the winds.

Traditional products – open air markets

Don't forget to pick up some of the famous Kithiran rusks, fatourada (traditional liqueur), cheese from the Mitata village, some exquisite thyme honey and the *sempreviva* wildflowers, which can only be found in Kithira. Visit the open market every Sunday morning in the Potamos village square. Potamos and Livadi make up the area's center of commerce and are the largest villages on the island.

Entertainment

Merkato, music bar, Chora
Zeidoros centre for the Arts and Education, Kapsali
Outdoor concerts and bars in the picturesque port of Avlemona

Sights

The castle in the Chora (the island's main village)
The small island of Hytra across from Chora
Waterfalls and the cave of Ag. Sofia in Mylopotamos
The stone bridge in the village of Kato Livadi
Paliochora – an ancient settlement
A walk through the traditional village of Aroniadika
Antikithira

The above mentioned information concerning beaches, sights and entertainment represents indicative suggestions.

For additional information please visit the following websites:

www.kythera.gr
www.kythera.gr Municipality of Kythira
www.visitkythera.gr
www.kytheraweb.com Professionals' Union of Kythira
www.kithera.gr



Π Ο Ρ Τ Α Ρ Ι
PORTARI HOUSES

ARONIADIKA, KITHIRA, GREECE

Owner
Mrs. Evmorfia Bardi

Tel. - Fax +30 27360-33.398 or +30 210-96.50.134
Cell +30 6977-84.29.24
info@portari-houses.com
www.portari-houses.com